

## Indict Five Garbage Contractors on Rigging of Bids For Belleville

County Grand Jury Indicts Five Garbage Collecting Firms For Allegedly Conspiring To Fix \$629,500 Belleville Contract

Teamsters' Union official John Seratelli, business manager of Clifton Local 945, and five Essex County garbage contractors were indicted Tuesday by the County Grand Jury for allegedly conspiring to "rig" the bidding of the \$629,500 five-year garbage contract held by the Town of Belleville.

The contractors named defendants are: Joseph Cassini of the James Petrozello Co., Inc., of East Orange; Thomas Viola of Thomas Viola & Son, Inc., of Nutley; Crescent Roselle of Peter Roselle & Son, Inc., of East Orange; Andrew Miele of Miele Bros. of Caldwell; and Lorenzo Pucillo of East Orange, the contractor who was awarded the Belleville contract by a low bid among the firms submitted by the other four contractors.

Seratelli had previously been indicted on the same charges in a grand jury investigation and released in \$7,500 bail on a charge of accepting a bribe from a contractor.

The indictment handed up yesterday to Superior Court Judge Alexander P. Waugh charges conspiracy to cheat and defraud Belleville and to pervert and obstruct the administration of the public laws.

According to Dep. Atty. Gen. Charles S. Jolson, the indictment is based on an allegation that Pucillo bid on the Belleville contract with the aid of the other four contractors who were told what amount to bid by Pucillo.

"He was like a master of ceremonies," Jolson said. "Jolson pointed out that the indictment charges specifically conspiracy to cheat and defraud rather than to engage in racketeering or extortion because there is no statute which makes rigging bidding a criminal offense."

The overt acts in support of the conspiracy alleged by the indictment are the submission of bids by the five contractors on December 19, 1955, and the awarding of a contract with the town on December 27, 1955.

The grand jury has been investigating the case since February 3 and has concluded the witness phase of its probe. Jolson's office is now in the hands of the grand jury.

Major Isadore J. Pucillo said Wednesday that he will continue to honor his contract with Lorenzo Pucillo, which expires January 1, 1960. "It wouldn't be fair to me after the fact to take action until after the case is decided by the courts."

School One TV Study Is Popular

Since the arrival of the new television set the teachers at School Number One have seen many educational programs on TV. Mrs. Helen Kahan, third grade teacher, said that the TV set is very popular with the students. She said that the students are very interested in the programs and that the teachers are also interested in the programs.

Mrs. Augusta M. Klein and Miss Dolores Voglia have used the TV for their sixth grade class. They have used it for many years and it is very popular with the students.

Mrs. Augusta M. Klein and Miss Dolores Voglia have used the TV for their sixth grade class. They have used it for many years and it is very popular with the students.

Mrs. Augusta M. Klein and Miss Dolores Voglia have used the TV for their sixth grade class. They have used it for many years and it is very popular with the students.

Mrs. Augusta M. Klein and Miss Dolores Voglia have used the TV for their sixth grade class. They have used it for many years and it is very popular with the students.

Mrs. Augusta M. Klein and Miss Dolores Voglia have used the TV for their sixth grade class. They have used it for many years and it is very popular with the students.

Mrs. Augusta M. Klein and Miss Dolores Voglia have used the TV for their sixth grade class. They have used it for many years and it is very popular with the students.

Mrs. Augusta M. Klein and Miss Dolores Voglia have used the TV for their sixth grade class. They have used it for many years and it is very popular with the students.

Mrs. Augusta M. Klein and Miss Dolores Voglia have used the TV for their sixth grade class. They have used it for many years and it is very popular with the students.

Mrs. Augusta M. Klein and Miss Dolores Voglia have used the TV for their sixth grade class. They have used it for many years and it is very popular with the students.

Mrs. Augusta M. Klein and Miss Dolores Voglia have used the TV for their sixth grade class. They have used it for many years and it is very popular with the students.

Mrs. Augusta M. Klein and Miss Dolores Voglia have used the TV for their sixth grade class. They have used it for many years and it is very popular with the students.

## GRANT VARIANCE TO APARTMENT HOUSE PROJECT

Commissioners Unanimously Approve Variance For Belleville Ave. Construction

A zoning variance (which would permit construction of an apartment house at the corner of Belleville Avenue and Lincoln Terrace was passed by a unanimous vote at last Thursday's Commission meeting.

The variance had been previously approved by the Board of Adjustment, but 59 residents in the neighborhood protested when the measure came before the Board of Commissioners for final action. Grounds for their protest stemmed from the contention that the construction would create traffic hazards in the area and that there was no extenuating circumstance that would allow for a variance from the established zoning ordinance.

The proposed building would be a two-story apartment house containing 24 units and including a 15-car parking lot.

Bel Court Apartments, Inc., are the builders.

The contention of the builders that the owners of the lot had been unable to sell it for a long time was not a factor in the decision. The Board of Commissioners stated that there were several other apartment houses in the immediate vicinity.

The variance was needed because the number of apartments exceeded the maximum permitted in a business zone. A side and front yard are too small, and parking lots are not permitted in a residential zone.

The commissioners stipulated that cars must enter the parking lot from Lincoln Terrace and leave it from Belleville Avenue. Construction must start within six months.

BANDS PREPARE FOR MARCH 3 CONCERT NIGHT

Other Dates Scheduled For Three Band Groups At Belleville High School

Belleville High School's three bands are at work in preparation for the coming concert season.

Principal target date for their efforts is the Fourth Annual Music Festival to be held in the high school on Tuesday evening, March 3. This spectacular show, which includes a variety of musical acts, is one of the most popular events on the school calendar.

The Mathematics Department offers three programs: mathematics club, early bird club, and college preparation. The mathematics club, sponsored by Mario Di Maggio, chairman of the mathematics department, 28 students meet each Wednesday at 8 a.m.

The "early bird" club, 12 students, meet twice weekly at 8 a.m. on college-bound students. If 10 students are enrolled, Mr. Di Maggio will provide them with a course in analytical geometry. Remedy classes, sponsored by Mrs. Elizabeth Schuchman, meet each Tuesday, 8 a.m. to 12 noon. Besides these special programs for the past two years two classes of the most able students entering high school have been established to do work leading to advanced standing upon college admission.

The Business Education Department offers typewriting for personal use, four days weekly, 8 a.m. to 12 noon. Typewriting is taught by Mrs. Elizabeth Schuchman, department chairman. Mrs. Anne Schuchman, Miss Anna Gray, and Miss Lillian DePaul, 21 students enrolled. Miss Charles Schuchman is offering bookkeeping, and Mrs. Marie Curran, shorthand, and Mrs. Lillian DePaul, dictation, are providing a course in Business Civilization, every Thursday, 8 a.m. to 12 noon. Besides these special programs for the past two years two classes of the most able students entering high school have been established to do work leading to advanced standing upon college admission.

The question as to whether or not present Board insurance policies should be continued, and the question as to whether or not the policies cover anyone on school premises, was also raised, but it was decided to leave the matter to the Board of Education.

The question as to whether or not present Board insurance policies should be continued, and the question as to whether or not the policies cover anyone on school premises, was also raised, but it was decided to leave the matter to the Board of Education.

The question as to whether or not present Board insurance policies should be continued, and the question as to whether or not the policies cover anyone on school premises, was also raised, but it was decided to leave the matter to the Board of Education.

The question as to whether or not present Board insurance policies should be continued, and the question as to whether or not the policies cover anyone on school premises, was also raised, but it was decided to leave the matter to the Board of Education.

The question as to whether or not present Board insurance policies should be continued, and the question as to whether or not the policies cover anyone on school premises, was also raised, but it was decided to leave the matter to the Board of Education.

The question as to whether or not present Board insurance policies should be continued, and the question as to whether or not the policies cover anyone on school premises, was also raised, but it was decided to leave the matter to the Board of Education.

The question as to whether or not present Board insurance policies should be continued, and the question as to whether or not the policies cover anyone on school premises, was also raised, but it was decided to leave the matter to the Board of Education.

The question as to whether or not present Board insurance policies should be continued, and the question as to whether or not the policies cover anyone on school premises, was also raised, but it was decided to leave the matter to the Board of Education.



## High School Needs Of Gifted Students

Belleville High School teachers reported recently on their efforts to meet the needs of gifted and academically talented students.

All departments and many teachers are offering programs before and after school. A crowded high school and a full schedule led teachers to give time beyond the daily schedule to aiding the higher ability students and others who want help. Already 278 students are taking part in these programs.

Science programs include a sophomore meteorology club meeting every Friday, 8 a.m., sponsored by Nova Edwards, department chairman. The club studies temperature, pressure, and air currents, weather analysis, and forecasts. Freshman science classes are also offered.

The Mathematics Department offers three programs: mathematics club, early bird club, and college preparation. The mathematics club, sponsored by Mario Di Maggio, chairman of the mathematics department, 28 students meet each Wednesday at 8 a.m.

The "early bird" club, 12 students, meet twice weekly at 8 a.m. on college-bound students. If 10 students are enrolled, Mr. Di Maggio will provide them with a course in analytical geometry. Remedy classes, sponsored by Mrs. Elizabeth Schuchman, meet each Tuesday, 8 a.m. to 12 noon. Besides these special programs for the past two years two classes of the most able students entering high school have been established to do work leading to advanced standing upon college admission.

The Business Education Department offers typewriting for personal use, four days weekly, 8 a.m. to 12 noon. Typewriting is taught by Mrs. Elizabeth Schuchman, department chairman. Mrs. Anne Schuchman, Miss Anna Gray, and Miss Lillian DePaul, 21 students enrolled. Miss Charles Schuchman is offering bookkeeping, and Mrs. Marie Curran, shorthand, and Mrs. Lillian DePaul, dictation, are providing a course in Business Civilization, every Thursday, 8 a.m. to 12 noon. Besides these special programs for the past two years two classes of the most able students entering high school have been established to do work leading to advanced standing upon college admission.

The question as to whether or not present Board insurance policies should be continued, and the question as to whether or not the policies cover anyone on school premises, was also raised, but it was decided to leave the matter to the Board of Education.

The question as to whether or not present Board insurance policies should be continued, and the question as to whether or not the policies cover anyone on school premises, was also raised, but it was decided to leave the matter to the Board of Education.

The question as to whether or not present Board insurance policies should be continued, and the question as to whether or not the policies cover anyone on school premises, was also raised, but it was decided to leave the matter to the Board of Education.

The question as to whether or not present Board insurance policies should be continued, and the question as to whether or not the policies cover anyone on school premises, was also raised, but it was decided to leave the matter to the Board of Education.

The question as to whether or not present Board insurance policies should be continued, and the question as to whether or not the policies cover anyone on school premises, was also raised, but it was decided to leave the matter to the Board of Education.

The question as to whether or not present Board insurance policies should be continued, and the question as to whether or not the policies cover anyone on school premises, was also raised, but it was decided to leave the matter to the Board of Education.

The question as to whether or not present Board insurance policies should be continued, and the question as to whether or not the policies cover anyone on school premises, was also raised, but it was decided to leave the matter to the Board of Education.

The question as to whether or not present Board insurance policies should be continued, and the question as to whether or not the policies cover anyone on school premises, was also raised, but it was decided to leave the matter to the Board of Education.

The question as to whether or not present Board insurance policies should be continued, and the question as to whether or not the policies cover anyone on school premises, was also raised, but it was decided to leave the matter to the Board of Education.

The question as to whether or not present Board insurance policies should be continued, and the question as to whether or not the policies cover anyone on school premises, was also raised, but it was decided to leave the matter to the Board of Education.

The question as to whether or not present Board insurance policies should be continued, and the question as to whether or not the policies cover anyone on school premises, was also raised, but it was decided to leave the matter to the Board of Education.

The question as to whether or not present Board insurance policies should be continued, and the question as to whether or not the policies cover anyone on school premises, was also raised, but it was decided to leave the matter to the Board of Education.

The question as to whether or not present Board insurance policies should be continued, and the question as to whether or not the policies cover anyone on school premises, was also raised, but it was decided to leave the matter to the Board of Education.

The question as to whether or not present Board insurance policies should be continued, and the question as to whether or not the policies cover anyone on school premises, was also raised, but it was decided to leave the matter to the Board of Education.

## KIERNAN NAMES MRS. SHAFER TO LIBRARY BOARD

Commissioner Expresses Confidence In Mrs. Shafter's Qualifications For Post

Commissioner George F. Kiernan announced this week the appointment of Mrs. Richard A. Shafter, of 131 Broadway Street, as member of the Belleville Public Library Board.

In a letter of February 18, in which he asked Mrs. Shafter to join the appointment, Kiernan wrote:

"I know how busy your various public interests keep you, but I am sure that you are one of the few people, either by training, background or personal interest, is better qualified to fill that position. You have many years as a professional customer's counselor in one of the country's largest banks. I am sure your eminent success as a volunteer worker for the Clara Maass Hospital in organizing and supervising the patients' library there, is your unflagging interest in the Belleville Public Library. I am generally full of confidence that your appointment would add to the Library Board an element of foresight and knowledge that cannot but lead to better service for the community. You are, as a whole, and our young people more especially."

Mrs. Shafter's appointment to the Board becomes effective March 1. She will succeed Mrs. George R. Noonan, who has been a member of the Board since 1953. Mrs. Shafter is a full-time employee of the Town of Belleville, where she has been working for the Clara Maass Hospital in organizing and supervising the patients' library there.

As a whole, and our young people more especially, Mrs. Shafter is a full-time employee of the Town of Belleville, where she has been working for the Clara Maass Hospital in organizing and supervising the patients' library there.

As a whole, and our young people more especially, Mrs. Shafter is a full-time employee of the Town of Belleville, where she has been working for the Clara Maass Hospital in organizing and supervising the patients' library there.

As a whole, and our young people more especially, Mrs. Shafter is a full-time employee of the Town of Belleville, where she has been working for the Clara Maass Hospital in organizing and supervising the patients' library there.

As a whole, and our young people more especially, Mrs. Shafter is a full-time employee of the Town of Belleville, where she has been working for the Clara Maass Hospital in organizing and supervising the patients' library there.

As a whole, and our young people more especially, Mrs. Shafter is a full-time employee of the Town of Belleville, where she has been working for the Clara Maass Hospital in organizing and supervising the patients' library there.

As a whole, and our young people more especially, Mrs. Shafter is a full-time employee of the Town of Belleville, where she has been working for the Clara Maass Hospital in organizing and supervising the patients' library there.

As a whole, and our young people more especially, Mrs. Shafter is a full-time employee of the Town of Belleville, where she has been working for the Clara Maass Hospital in organizing and supervising the patients' library there.

As a whole, and our young people more especially, Mrs. Shafter is a full-time employee of the Town of Belleville, where she has been working for the Clara Maass Hospital in organizing and supervising the patients' library there.

As a whole, and our young people more especially, Mrs. Shafter is a full-time employee of the Town of Belleville, where she has been working for the Clara Maass Hospital in organizing and supervising the patients' library there.

As a whole, and our young people more especially, Mrs. Shafter is a full-time employee of the Town of Belleville, where she has been working for the Clara Maass Hospital in organizing and supervising the patients' library there.

As a whole, and our young people more especially, Mrs. Shafter is a full-time employee of the Town of Belleville, where she has been working for the Clara Maass Hospital in organizing and supervising the patients' library there.

As a whole, and our young people more especially, Mrs. Shafter is a full-time employee of the Town of Belleville, where she has been working for the Clara Maass Hospital in organizing and supervising the patients' library there.

As a whole, and our young people more especially, Mrs. Shafter is a full-time employee of the Town of Belleville, where she has been working for the Clara Maass Hospital in organizing and supervising the patients' library there.

As a whole, and our young people more especially, Mrs. Shafter is a full-time employee of the Town of Belleville, where she has been working for the Clara Maass Hospital in organizing and supervising the patients' library there.

As a whole, and our young people more especially, Mrs. Shafter is a full-time employee of the Town of Belleville, where she has been working for the Clara Maass Hospital in organizing and supervising the patients' library there.

As a whole, and our young people more especially, Mrs. Shafter is a full-time employee of the Town of Belleville, where she has been working for the Clara Maass Hospital in organizing and supervising the patients' library there.

As a whole, and our young people more especially, Mrs. Shafter is a full-time employee of the Town of Belleville, where she has been working for the Clara Maass Hospital in organizing and supervising the patients' library there.

As a whole, and our young people more especially, Mrs. Shafter is a full-time employee of the Town of Belleville, where she has been working for the Clara Maass Hospital in organizing and supervising the patients' library there.

As a whole, and our young people more especially, Mrs. Shafter is a full-time employee of the Town of Belleville, where she has been working for the Clara Maass Hospital in organizing and supervising the patients' library there.

As a whole, and our young people more especially, Mrs. Shafter is a full-time employee of the Town of Belleville, where she has been working for the Clara Maass Hospital in organizing and supervising the patients' library there.

## Set March 19 Date For Public Hearing On Belleville Budget

Salary Increases In Five Departments Seen As Biggest Boosters Of 1959 Municipal Budget

Figure: Total Appropriation Up \$228,336

Thursday, March 19, has been set for the public hearing on the proposed municipal budget for 1959.

The hearing will be held in the Commission meeting room at Town Hall beginning at 8 p.m.

This year's budget provides for a 79-point hike in the tax rate, going from last year's \$7.25 rate to \$7.99. This figure, however, is subject to modification before final certification by the County Board of Taxation.

The total general appropriation for 1959 amounts to \$2,518,691.10, an increase of \$228,336 over last year's appropriation. The property tax for support of the municipal budget appropriations comes to \$1,679,064.10. This figure represents the difference of \$84,327 between the total general appropriation and the anticipated revenue other than current property tax. Last year's property tax figure was \$1,594,737.

The estimated tax rate for local schools for 1959 is \$2.147, an increase of \$0.001 over last year's estimated rate of \$2.146. The estimated tax rate for County purposes is \$1.005, a hike of \$0.005 from last year's \$1.000.

Excesses in the municipal tax rate from \$2.56 to \$2.78, a difference of 1.2 points, the estimated rate for 1959 is \$2.78, a difference of \$0.001 over last year's estimated rate of \$2.77. The estimated tax rate for County purposes is \$1.005, a hike of \$0.005 from last year's \$1.000.

The measure was introduced by Mrs. Coronato in the light of the recent alleged embezzlement of municipal funds by the Board of Education. The Board of Education has been accused of embezzling \$10,000 from the school funds and report to the Board of Education.

The Board therefore passed a resolution providing for the removal of existing bank deposits and the security of the present handling of funds by the Board of Education. The resolution was passed by a vote of 10 to 2.

Whereas it is the duty of the Board of Education to administer public funds and to be in a position to furnish the public with all the information of their complete security, be it resolved that the Board of Education appoint a firm of auditors to verify the deposit of school funds by its custodian, the Board of Education.

The Board of Education has been accused of embezzling \$10,000 from the school funds and report to the Board of Education. The Board of Education has been accused of embezzling \$10,000 from the school funds and report to the Board of Education.

The Board of Education has been accused of embezzling \$10,000 from the school funds and report to the Board of Education. The Board of Education has been accused of embezzling \$10,000 from the school funds and report to the Board of Education.

The Board of Education has been accused of embezzling \$10,000 from the school funds and report to the Board of Education. The Board of Education has been accused of embezzling \$10,000 from the school funds and report to the Board of Education.

The Board of Education has been accused of embezzling \$10,000 from the school funds and report to the Board of Education. The Board of Education has been accused of embezzling \$10,000 from the school funds and report to the Board of Education.

The Board of Education has been accused of embezzling \$10,000 from the school funds and report to the Board of Education. The Board of Education has been accused of embezzling \$10,000 from the school funds and report to the Board of Education.

The Board of Education has been accused of embezzling \$10,000 from the school funds and report to the Board of Education. The Board of Education has been accused of embezzling \$10,000 from the school funds and report to the Board of Education.

The Board of Education has been accused of embezzling \$10,000 from the school funds and report to the Board of Education. The Board of Education has been accused of embezzling \$10,000 from the school funds and report to the Board of Education.

The Board of Education has been accused of embezzling \$10,000 from the school funds and report to the Board of Education. The Board of Education has been accused of embezzling \$10,000 from the school funds and report to the Board of Education.

The Board of Education has been accused of embezzling \$10,000 from the school funds and report to the Board of Education. The Board of Education has been accused of embezzling \$10,000 from the school funds and report to the Board of Education.

The Board of Education has been accused of embezzling \$10,000 from the school funds and report to the Board of Education. The Board of Education has been accused of embezzling \$10,000 from the school funds and report to the Board of Education.

The Board of Education has been accused of embezzling \$10,000 from the school funds and report to the Board of Education. The Board of Education has been accused of embezzling \$10,000 from the school funds and report to the Board of Education.

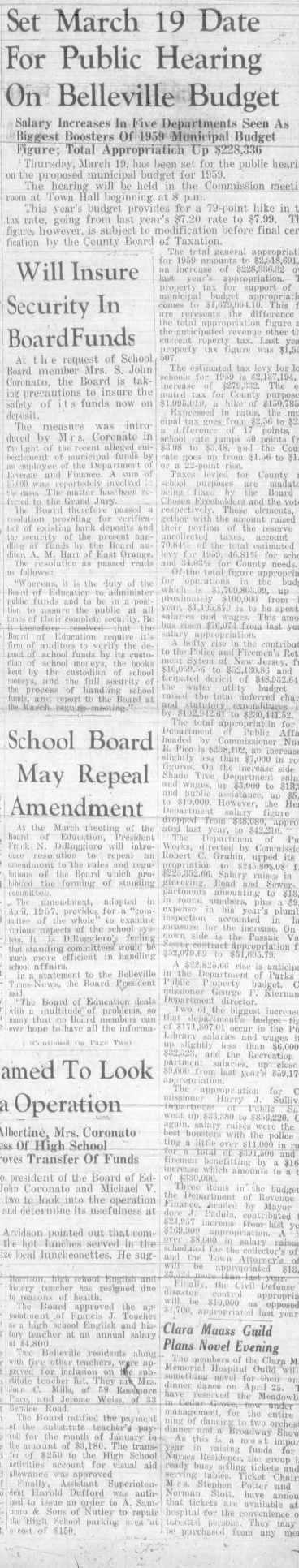
The Board of Education has been accused of embezzling \$10,000 from the school funds and report to the Board of Education. The Board of Education has been accused of embezzling \$10,000 from the school funds and report to the Board of Education.

The Board of Education has been accused of embezzling \$10,000 from the school funds and report to the Board of Education. The Board of Education has been accused of embezzling \$10,000 from the school funds and report to the Board of Education.

The Board of Education has been accused of embezzling \$10,000 from the school funds and report to the Board of Education. The Board of Education has been accused of embezzling \$10,000 from the school funds and report to the Board of Education.

The Board of Education has been accused of embezzling \$10,000 from the school funds and report to the Board of Education. The Board of Education has been accused of embezzling \$10,000 from the school funds and report to the Board of Education.

The Board of Education has been accused of embezzling \$10,000 from the school funds and report to the Board of Education. The Board of Education has been accused of embezzling \$10,000 from the school funds and report to the Board of Education.





## HEALTH HINTS

Dr. Wm. A. Watkins, President  
National Chiropractic Association

**Every Home A Gymnasium**  
Many people, while recognizing the physical and mental benefits of exercise, don't know how to go about doing it. Some believe in joining a health club so that exercises may be guided by a trained instructor.

However, a few basic exercises practiced 10 minutes a day in your own bedroom soon bring startling results in toning up your body, improving your appearance, creating new energy. Repeat each of the following five times at the beginning, gradually increasing after two weeks.

**Sit-ups.** Lie on your back, bend your knees, keep your feet flat on the floor or tuck them under a low chair. Put your hands behind your neck. Then pull up to a sitting position.

**Heads and hands.** Take a squatting position, knees together, back straight. Rise slowly to your feet and stretch. Then lower yourself to your original squatting position.

**Push-ups.** Lie on your stomach, placing your hands a shoulder's width apart. Keeping your back tight, raise yourself, then let yourself down. As your arms and shoulders rest, execute this without letting your chest touch the floor.

**Flank swim.** Lie prone on your stomach and raise your right arm and your left leg simultaneously. Repeat the exercise, alternating with the left arm and right leg, etc.

Your doctor of chiropractic stresses the fact that, in order to be effective, these exercises must be followed regularly, not sporadically.

DISTAFF BOWLERS  
UPSET IN CYO

League Leading St. Mary's Girls  
Team Drops All Three Games  
To St. Anthony's

CYO Boys' Bowling League

Team Standings

Team	W	L
St. Anthony's 1	14	4
St. Mary's 3	12	6
St. Mary's 2	8	10
St. Peter's 1	8	10
St. Peter's 2	8	10
St. Anthony's 2	4	14

CYO Girls' Bowling League

Team Standings

Team	W	L
St. Mary's	14	4
St. Anthony's 1	11	7
St. Peter's	6	12
St. Anthony's 2	5	13

St. Mary's entry in the CYO Girls' Bowling League received a severe jolt in action last week as the No. 1 squad from St. Anthony's, of Belleville, upset the No. 2 Nutley leaders in all three games.

St. Anthony's received a 62-pin handicap and that turned out to be the difference. The Nutley bowlers were down by scores of 534-530, 582-562 and 608-532. Karen Kish was the top leader for St. Mary's in the losing cause as she bowled a 131 game.

The three defeats suffered by St. Mary's tightened the league. St. Mary's has won 14 games and dropped only four, while St. Anthony's 2 is in second with 11 wins and seven defeats.

In the Boys' League, St. Mary's  
Anthony's 2 and in an intra-parish  
huddle St. Mary's 3 won the odd  
game from St. Mary's 2.

Frank Gilbert, of the No. 3 St. Mary's team, turned in games of 219 and 192.

SENIOR BOWLERS  
REMAIN IN RACE

St. Mary's Mixed Team Records  
Sweep Over East Orange  
Keglers In CYO

St. Mary's kept its championship hopes alive in the Essex County CYO Senior Mixed Bowling League on Sunday, recording a sweep of Our Lady Help of Christians 2, of East Orange.

St. Mary's thus retained its fourth-place standing and didn't lose any more ground to the leaders, now three games ahead.

St. Mary's had little trouble with the East Orange five after the first game which it won, 764-702. St. Mary's won by 100 pins and 90 pins in the next two tests, although giving up 104 pins handicaps.

The Nutley team was sparked by Chuck Engel, who rolled a 181, 171, 213 series for a total of 565, league high for the night. Terry Ludwig chipped in with a 170 effort to lead the disaffiliated Keglers.

Building Dept.  
Reports Figures

According to the monthly report of the Building Department, six one-family dwellings with ranges were constructed in Belleville at a total of \$78,000.

In addition, Building Inspector Thomas J. Greco reported that one two-family dwelling was constructed at a cost of \$18,500.

Total for permits for the month of January amounted to \$428 of which \$299 was brought in by 14 building permits.

## Fischer At Symposium

Dr. S. P. Fischer of Belleville, a member of the New Jersey Optometric Association, attended an all-day symposium on a "Review of Optometric Recognition of Ocular Pathology" which was conducted Sunday at the Pennsylvania State College of Optometry in Harrisburg.

The symposium was sponsored by the New Jersey Optometric Association in conjunction with the Pennsylvania Optometric Association.

## Makes Dean's List

The dean's list for the first semester of the academic year at Mary Washington College of the University of Virginia contains the names of 95 students who maintained a "B plus" average with no grade below a "C". Among them is Miss Beth Baxter, daughter of Mr. and Mrs. Arthur Baxter of Belle Terrace, a first year student.

## Clark Receives Honor

Hugh A. Clark, Jr., seaman apprentice, USN, son of Mr. and Mrs. Hugh A. Clark, Sr., of 72 Bremond Street received an honor man certificate and an engraved plaque during recruit graduation at the Naval Training Center, Great Lakes, Ill. Capt. Harry H. Greer, Commanding Officer of the Naval Examining Center, made the presentation.

Clark was selected honor man by his instructors, company commander and fellow company members. Before entering the Navy in October 1958, he graduated from Belleville High School.

## Jehovah's Witnesses

August Russ, presiding minister and local spokesman for the Nutley congregation of Jehovah's Witnesses announces plans for a semi-annual circuit assembly of Jehovah's Witnesses to be held March 27 through 29 at the Patterson National Guard Armory, 475 Market Street, Paterson.

New Jersey circuit No. one now comprises 19 congregations from five counties in New Jersey and New York. The Nutley congregation has been invited to attend.

## P.T.A. School 1 To See Play

At the regular meeting of the P.T.A. of School No. 4, the Little Theatre of East Orange, in collaboration with the Mental Health Association of Essex County, will present the play, "Scattered Showers" for the Parent Education Group of School One. It will be held on Tuesday, March 30, at 8:15 p.m.

The arrangement for this presentation was made by Mrs. Dominic Lally.

Ross Receptant Of Award  
In Scholarship Fund

Michael Ross, son of Mr. and Mrs. Alexander Ross, of 18 Tremont Avenue, a senior at Belleville High School, has reached the finals of the 1958-59 National Merit Scholarship Program and has been awarded a certificate of merit. The certificate attests to his high academic promise.

The senior distinguished himself by high scores on two college aptitude tests used in the National Merit Scholarship competition. About six-tenths of one per cent of seniors in each state received the awards. Some 700 finalists will be named next month.

Dr. S. P. Fischer of Belleville, a member of the New Jersey Optometric Association, attended an all-day symposium on a "Review of Optometric Recognition of Ocular Pathology" which was conducted Sunday at the Pennsylvania State College of Optometry in Harrisburg.

Jr. Red Cross Boxes Sent  
To Children Overseas

Last week at the Junior Red Cross Town-Wide Council meeting a motion was made to accept the resignation of Lois Van Dyke as its President, with regret. Unfortunately she is now unable to attend meetings held on the second and Thursday of each month. For the balance of the year Eleanor Kwik, Vice President, will act as President. Elections will be held in May for officers for 1959-1960.

All schools except St. Peter's, which was not represented, reported on the gift box project. These boxes are filled and sent overseas to school children. Usually a classroom fills 2 boxes, one for a boy and one for a girl. They

contain such articles as pencils, crayons, pads, rulers, erasers, small toy's games, soap, combs, sandkerchiefs, needles, thread, tooth paste, etc. The boxes demonstrate the friendship and good will of our Juniors for children of other lands.

## Kiernan

(Continued From Page One)

have pursued football through their schooling and who have demonstrated well balanced living by participation in various activities such as church work, scouting, etc.

## Amendment

(Continued From Page One)

tion on each. On the other hand, a Board member can give some time to studying some phase of the school's operation and bring his findings to the whole board, for deliberation and action.

"When a board operates only as a committee of the whole Board, too many decisions are required of the Board and the president on which none of the Board members have first hand information. It is my hope to have every Board member share in the work of the Board, and to specialize in some phase of the Board's operation."

"All governmental bodies make use of standing committees. Most boards of education use standing committees. A standing committee, or any kind of committee, can be had if it does not report to the Board of Education on its findings and ask the Board to take the necessary action. I hope members of the Board will show their desire to share in the work of the Board by voting for my resolution in committees."

## Band Concert

(Continued From Page One)

In addition to this combined effort, each band has its own quota of special appearances. The Varsity Band will appear at Bloomfield High School, Clifford Scott High School in East Orange, and a Trenton Junior High school. Every year the Varsity Band exchanges concerts with three or four schools in the North Jersey area. The Concert Band, which is a larger unit, tours the Belleville grammar schools whose auditions will accommodate it, and the Dance Band, a fifteen-piece unit, will visit the smaller grammar schools in the spring.

## Body In River

(Continued From Page One)

could not be determined due to recent cold temperatures.

It was impossible to immediately identify the body because of the lack of clothing. The man had been in his late twenties, was about 5'8" in height and weighed approximately 150 pounds.

## Gifted Students

(Continued From Page One)

Myths in English Literature and Art" by Gayle, Robert Schrier, specialist in speech, is working with 17 students in speech fundamentals.

The German Club, sponsored by Miss Helen Holberg, is composed of eight boys and eight girls in the beginning German program.

meeting 8 a.m. each Tuesday  
morning. It aims to give these  
people more opportunity for the  
use of German. In an informal  
atmosphere, it makes use of re-  
cordings, songs, riddles, conversa-  
tion, and listen-repeat records. In  
its operation grammar is taboo.

More stress on education for gifted students has long been a goal of Superintendent of Schools Evan H. Thomas. Last fall he called together Hugh D. Kittle, High School Principal, Raymond Smith, Vice-Principal, the school psychologist, and Dr. Frank M. Durkee, General Supervisor, to discuss education for the gifted. From this action have emerged the new programs in the high schools. These programs will expand with the growing interest of the students.

EUROPE  
BOUND?

Enjoy the spaciousness, good food, ample menus, immaculate cleanliness and friendly, hospitable Holland-America service to IRELAND, ENGLAND, FRANCE and HOLLAND in THRIFT SEASON.



## Next Sailings:

NEW AMSTERDAM  
Mar. 25, Apr. 24  
STATENDAM Apr. 29, May 29  
RYNDAM Mar. 8, Apr. 9  
MAASDAM Apr. 14, June 11  
NORDAM Mar. 21, Apr. 18  
WESTERDAM Mar. 21, Apr. 18  
(Waiting list on some sailings.)  
Square tables in all seasons.

Minimum fares:  
First Class: \$242  
One Class: \$247  
Tourist Class: \$174  
Fares slightly higher beginning Apr. 15.

SEE YOUR TRAVEL AGENT.

Holland-  
America  
Line

29 Broadway, New York 6, N. Y.  
Whitehall 4-1900

IT'S GOOD TO BE ON A WELL-KNOWN SHIP

So convenient -  
You sail from, arrive at  
HOBOKEN, N. J.

## ELECTION NOTICE

Registrations and transfers of voters for the Primary Election to be held on April 21, 1959 will close March 22, 1959.

If you have not already permanently registered to vote, or have changed your address, please see your Town Clerk, Municipal Building, Belleville, New Jersey.

Office hours — 8:30 A.M. to 4:00 P.M. Monday through Friday.

Our office will also remain open from 8:30 A.M. to 9:00 P.M. on March 9th, 10th, 11th and 12th for the taking of registrations and transfers.

Last day to file County Committee Petitions is March 12th, until 4:00 P.M.

EUGENE G. BARNETT,  
Town Clerk

Biggest News In Reducing History!  
STAUFFER

America's No. 1 Home Reducing Plan

now only \$149.50



Stauffer's "Magic Couch" in the beautiful new Princess Model embodies 20 years of figure-beautifying success... is now yours for only \$149.50.

Only \$15 Down... \$9.85 a Month\*

It's the greatest bargain in the history of home reducing! Now you can get Stauffer — the complete, scientific home reducing plan of effortless exercise and calorie reduction at a price far less than ordinary vibrating units and other inferior imitations which simply cannot give you the results you demand.

ONLY STAUFFER brings you all these fabulous advantages!

1. Removes excess weight and inches, improves posture without starvation diet or strenuous exercise.
2. The Stauffer principle has brought new figure beauty to more than 5,000,000 women — an unparalleled record no imitator can possibly match!
3. Stauffer's "Magic Couch" (Posture Rest®) is unconditionally guaranteed in writing... approved by Underwriters Laboratory.
4. Genuine rhythmic oscillatory motion. No vibrations!

BEWARE OF IMITATORS! INSIST ON STAUFFER! ONLY \$149.50! ONLY \$15 DOWN... \$9.85 A MONTH\*

\*Varies According To Local and State Taxes  
CALL NUTLEY 2-2100 8 A.M. to 5 P.M.  
NUTLEY 2-1312 After 5 P.M.

## STAUFFER HOME PLAN

19 Chestnut Street, Nutley, N. J.

Please rub me further information about the famous Stauffer Home Reducing Plan — now at the lowest price in history.

Name \_\_\_\_\_ Phone \_\_\_\_\_

Address \_\_\_\_\_

City \_\_\_\_\_ State \_\_\_\_\_

**WHITE OAKS HARDWARE**  
70 UNION AVENUE  
NUTLEY, N. J.  
North 1-1040

**New LOWREY + today**  
World's first spinet with big organ features  
— priced under \$1,000

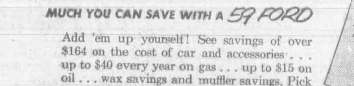
**SEE IT TODAY**  
Now, Lowrey brings the wonderful world of organ music within reach of many, many more families. And what an organ! So versatile it offers a wide range of faithful voices... sustains them in thrilling concert hall atmospheres. Come in and look. Come in and listen. You can have one in your home tonight.

**MUSCARA MUSIC**  
312 Washington Avenue  
Belleville  
PL 9-2220 - 2221  
Hours: 11 A.M. to 9 P.M.  
Saturday To 6 P.M.

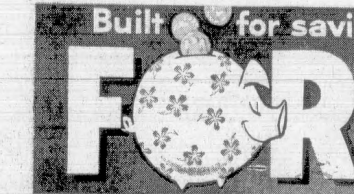
## GET THIS FREE BOOK...

WITH YOUR OWN FIGURES YOU'LL SEE HOW MUCH YOU CAN SAVE WITH A 59 FORD

Add 'em up yourself! See savings of over \$161 on the cost of car and accessories... up to \$40 every year on gas... up to \$15 on oil... save savings and muller savings. Pick up your copy at your Ford Dealer's today!



THEY'RE BUILT FOR PEOPLE, TO!



THEY'RE BUILT FOR PEOPLE, TO!

THEY'RE BUILT FOR PEOPLE, TO!

THEY'RE BUILT FOR PEOPLE, TO!

THEY'RE BUILT FOR PEOPLE, TO!

THEY'RE BUILT FOR PEOPLE, TO!

THEY'RE BUILT FOR PEOPLE, TO!

THEY'RE BUILT FOR PEOPLE, TO!

THEY'RE BUILT FOR PEOPLE, TO!

THEY'RE BUILT FOR PEOPLE, TO!

THEY'RE BUILT FOR PEOPLE, TO!

THEY'RE BUILT FOR PEOPLE, TO!

THEY'RE BUILT FOR PEOPLE, TO!

THEY'RE BUILT FOR PEOPLE, TO!

THEY'RE BUILT FOR PEOPLE, TO!

THEY'RE BUILT FOR PEOPLE, TO!

THEY'RE BUILT FOR PEOPLE, TO!

THEY'RE BUILT FOR PEOPLE, TO!

THEY'RE BUILT FOR PEOPLE, TO!

THEY'RE BUILT FOR PEOPLE, TO!

THEY'RE BUILT FOR PEOPLE, TO!

THEY'RE BUILT FOR PEOPLE, TO!

THEY'RE BUILT FOR PEOPLE, TO!

THEY'RE BUILT FOR PEOPLE, TO!

THEY'RE BUILT FOR PEOPLE, TO!

THEY'RE BUILT FOR PEOPLE, TO!

THEY'RE BUILT FOR PEOPLE, TO!

THEY'RE BUILT FOR PEOPLE, TO!

THEY'RE BUILT FOR PEOPLE, TO!

THEY'RE BUILT FOR PEOPLE, TO!

THEY'RE BUILT FOR PEOPLE, TO!

THEY'RE BUILT FOR PEOPLE, TO!

THEY'RE BUILT FOR PEOPLE, TO!

THEY'RE BUILT FOR PEOPLE, TO!

THEY'RE BUILT FOR PEOPLE, TO!

THEY'RE BUILT FOR PEOPLE, TO!

THEY'RE BUILT FOR PEOPLE, TO!

THEY'RE BUILT FOR PEOPLE, TO!

THEY'RE BUILT FOR PEOPLE, TO!

THEY'RE BUILT FOR PEOPLE, TO!

THEY'RE BUILT FOR PEOPLE, TO!

THEY'RE BUILT FOR PEOPLE, TO!

THEY'RE BUILT FOR PEOPLE, TO!

THEY'RE BUILT FOR PEOPLE, TO!

THEY'RE BUILT FOR PEOPLE, TO!

THEY'RE BUILT FOR PEOPLE, TO!

THEY'RE BUILT FOR PEOPLE, TO!

THEY'RE BUILT FOR PEOPLE, TO!

THEY'RE BUILT FOR PEOPLE, TO!

## ..Activities in Local Churches..

### Services At Grace Church

The services arranged at the Grace Baptist Church, Overlook Avenue and Bremond Street, are as follows: Sunday morning at 9:45, Church School with classes for all age levels. At 10, the Pastor's Class in Church Membership. At 11, Morning Worship and Sermon. The Lord's supper will be observed. Sermon by the pastor, Rev. Albert V. Lawson, "Life's Dimensions." A nursery is provided for pre-school children. At 7:30, Baptist Youth Fellowship.

Wednesday evening at 8, the third in a series of Lenten Mid-week Services considering the general subject, "The Message and Mission of the Church." The topic next week will be, "A New Kind If Life." The public is invited.

Give your family the lift of faith by going with them this Sunday to the Church of your choice.

### Little Zion UAME

The Rev. George L. Blackwell, At Vasek Memorial A. M. E. Zion Church, Hackensack, will be the speaker on Sunday, March 1, at the Conference Workshop Program, at Little Zion U. A. M. E. Church, 144 Stephen Street, Rev. Mary A. Farrar, Pastor.

Two choirs and members of the congregation of Vasek Memorial Church will accompany Rev. Blackwell. The public is invited to attend.

### Reformed Church News

The Belleville Reformed Church, Main and Rutgers Streets, the Rev. Thomas Ten Hoeve, Minister. The church school meets Sunday at 9:30 a.m. The Adult Class meets in the church at 10 a.m. Worship service at 11 a.m. with sermon message: Let Mea Jesus Through His Word. The youth fellowship will meet at 7:30 p.m.

Weekly activities begin Tuesday with the meeting of the Girl Scouts at 7 p.m. The Lenten worship service is at 8 p.m. Wednesday. The message will be the third in a series of Lenten Messages—The Anguish of His Soul. Fellowship hour with light refreshments after the service. The choir will meet at 8 p.m. Thursday. The Ladies Aid will meet Thursday at 1:45 p.m. at the home of Mrs. E. F. Nalley. The Consistory will hold its regular monthly meeting Friday at 8 p.m.

### At Fewsmith

Fewsmith Memorial Presbyterian Church is located corner of Union Avenue and Little Street, George L. Van Leuven, Pastor.

Sunday, March 1, Church school, 9:30. Morning Worship at 11. Pastor begins a Lenten series of messages from the Gospel according to Luke. At 8:30 p.m., Junior high Westminster Fellowship 7:45, senior high 8 o'clock first in series of Sunday evening pre-lenten services. Cathedral sound motion picture depicting the ministry of John the Baptist and commencement of the ministry of the "Voice in the Wilderness."

Wednesday, 7:30 p.m., Bible study series: The Life of Christ.

### Christ Church Activities

The following presents a listing of the services and organizations to be held at Christ Episcopal Church during the week beginning March 1, Sunday 7:30 a.m., Holy Communion; 10:15 a.m., Sunday School and Family Prayer and Holy Communion; 7:30 p.m., Young Peoples Fellowship Meeting.

Monday 7:30 p.m., Holy Scout No. 385; 8 p.m., Women's Auxiliary Meeting. Tuesday 1 p.m., Cancer Dressings; 7 p.m., Girl Scout Troop No. 14.

Wednesday 7 a.m., Holy Communion; 10 a.m., Holy Communion; 7 p.m., Scout meeting. Thursday 7 p.m., Pre-Senior Choir Rehearsal; 8 p.m., Lenten Service; 9 p.m., Senior Choir Rehearsal.

### Cong. AA Service

20 new members will be formally inducted at the services tonight at Congregation Anavah Achin, at 8:30. Louis S. Sman, President of the Congregation, will induct and welcome the members. Sec'y, membership chairman, will assist.

Rabbi Victor Cohen will deliver the sermon "Responsibilities from within and without" on Shabbat, in honor of the inductees, will follow the services.

### CYO Breakfast March 15

The Essex County CYO will hold its 16th annual Communion breakfast at the Hotel Essex House, Newark, on Sunday, March 15. The breakfast will follow a CYO Mass to be said by Father Affonso at St. Columba's church, two blocks from the hotel, at 9:15 a.m.

### Weekend Weather

Sky will be cloudy on Saturday with possible showers on Sunday. The temperature will be several degrees above normal.

### Engagement Told



Miss Donna Jean Guglicelli, of 75 Lake Street, announce the engagement of their daughter, Miss Donna Jean Guglicelli to George Fabricatore, son of Mr. and Mrs. Joseph Fabricatore, of 67 Garden Street, Newark. The announcement was made at a family dinner party held February 14, at Parillo's.

The bride elect is a graduate of Belleville High School. Her fiancé graduated from East Side High School, Newark. The couple are employed by Federal Industries, Belleville.

### Local Family To Have Guest From Fiji Isles

Kevin Ladd, a representative of Colonial Sugar Refining Company, of Leveque, Fiji Islands, will visit with the Karl Goettert family, of 108 Garden Avenue, when he visits the United States next week.

Mr. Ladd met Miss Lisalotte Goettert while attending the 1957 Olympic Games.

### Paul Simpsons Have Son

Mr. and Mrs. Paul Simpson, of St. Thomas, Virgin Islands, formerly of Belleville, announce the birth of a son, Jeffrey Paul, on February 1, in St. Thomas.

Mrs. Simpson is the former Alice Mander, of Belleville. Mr. Simpson is the son of Mr. and Mrs. Lester Simpson of 188 Floyd Street, who have returned home after a visit with the couple.

### Cadet Reinman Promoted

Paul Reinman, of 47 Division Avenue, has been appointed assistant to the Cadet Wing Commander, at Newark College of Engineering. Cadet Reinman, a chemical engineering student, has been promoted to the rank of Cadet First Lieutenant in the Air Force ROTC Detachment 400 at the college.

### Robert Kowalski Wed In Ohio

The marriage of Miss Carolyn Jean O'Connor, daughter of Mr. and Mrs. G. P. O'Connor, of Bowling Green, Ohio, to Robert Kowalski, son of Mr. and Mrs. Stephen Kowalski, of 411 Cortland Street, took place recently in St. Alois Church, Bowling Green.

The Rev. Joseph Hartmann performed the ceremony at a Nuptial Mass. A breakfast followed at the Woman's club.

The bride, given in marriage by her father was attended by her sister, Dr. Katherine O'Connor, John Mulford, Jr., of Detroit, served as best man.

The couple flew to New York, where on February 19, they sailed on the SS United States, for Belgium, for a six months stay, followed by another six months stay in Germany where the groom is being sent by General Motors Corp. He is a graduate of Belleville High School, Duke and Lehigh Universities. The bride attended Ohio Schools and is a school teacher.

### Mrs. John Connelly Heads Communion Breakfast

The Rosary Fraternity of St. Peter's Church, has completed plans for its annual Communion breakfast to take place on Sunday, March 1st, at the Hotel Robert Treat, Newark, immediately following the 8 o'clock mass.

Mrs. John E. Connelly is Chairman, assisted by: Mrs. Stanley Akus, Mrs. John Armet, Mrs. Edward Cary, Miss Constance Connelly, Mrs. Bart Donachie, Mrs. William Dool, Miss Theresa Halpin.

And Mesdames Joseph Jeffery, John Louise, Thomas Mack, Edward Mahler, William McCoy, John Dermott, Isadore Padula, Robert Palumbo, James Ryan, Oreste Savare, James Schleifer, Joseph Tremel, Rudolph Zoeller and Miss Nellie Salomon. Mrs. William Finnegan will be the Toastmistress.

### Sightseeing In Europe

Miss Margaret M. Wasyko, of 8 Tremont Avenue, has arrived in Amsterdam, Holland for three weeks of sightseeing and winter sports through Switzerland, Austria, Germany, France and Italy. She is a member of the Twin Hickory Ski Club, of Nutley, which departed recently, via KLM Airlines for the vacation jaunt.

While in Europe Miss Wasyko will visit home for an audience with his holiness Pope John XXIII, then to Paris and home. A graduate of Belleville High School, she is attending evening classes at Seton Hall University and is employed in the Allwood division of Bell of the Bell Telephone Company.

## Club Doings Make News

### Guidance Assn. To Meet

The executive committee of the Belleville Club Guidance Association will meet Thursday evening March 12, at the home of the secretary, Mrs. Seymour Perko, 39 Van Ryeper Place, at 8:30.

The next regular meeting of the group will be on Thursday, March 12, at the Woman's Club, 91 Rossmore Place, 8:30 p.m. Nominations of new officers will be discussed.

### New Officers For Vince Strumolo Association

Officers who were installed by Nelson Sheets, Essex County Supervisor, at the Vince Strumolo Association Valentine Dance, at St. Salvatore, president; Mike Del Russo, vice-presidents; Marie Napolitano, recording secretary; Norma Napolitano, corresponding secretary; Mike Pizzuto, Sergeant at Arms.

Trustees: for one year, Nick Ranno; two years, Mike Garas; three years, Ray Potonozio.

### Tri-Town BPW Meet

Miss Ellen L. Keely, of the Public Relations Department of Fidelity Union Trust Company, Newark, was the guest speaker at the dinner meeting of Tri-Town Business and Professional Women's Club of Belleville, Bloomfield and Nutley held on last evening, at the Park Methodist Church, Bloomfield. Miss Keely's subject was "Popular Misconceptions of Banks & Bankers," based on both theory and practice.

Miss Margaret Dillon, Tri-Town Finance Chairman, was in charge of the evening's program. A board meeting of Tri-Town will be held on Thursday evening, March 5, at the home of the treasurer, Miss Bette Matt of Nutley.

### Legion Party And Dance

Tomorrow evening, February 28th, Belleville Post #105 American Legion will hold its month end Home Party and Dance at the Legion Home, 621 Washington Avenue, with music for dancing supplied by Augie Cundari and his Music Makers. Refreshments will be served and tickets may be obtained from Post members.

The next regular meeting of the Belleville Post will be on March 9th at which time plans for the 40th Anniversary of the American Legion will be formulated.

### Cancer Fund Card Party

V. F. W. Woman's Auxiliary #275 will hold the Cancer Fund Card Party on Thursday, March 12, in the VFW Hall, 17 Belleville Avenue, 8:15 p.m. The public is invited to attend.

### Everyman's Bible Class

Sunday's session of the Everyman's Bible Class of Belleville has been designated as DeMolay and Father & Son Sunday. The class meets at the Masonic Temple on Jerusalem Street at 9:30 a.m. and accordingly all members of the DeMolay as well as Fathers & Sons are invited to attend. Class Leader Archie Donaldson will deliver the Bible message and the song service will be under the direction of Class President and song leader Andy Verhagen.

### K of C Breakfast

The annual Communion breakfast of Monsignor George Hobart Moore, General Assembly Fourth Degree Knights of Columbus, will be held Sunday, March 1, following the 9 a.m. Mass in St. Anthony's Church. The affair will be in the school auditorium, 25 North 7th Street.

Speakers for the event will be Commissioner George Kieran; George Doane McLaughlin, past president of the Catholic Lawyers Guild; Stephen Fogarty, president of Commander Shea Division, Ancient order of Hibernians.

Also the Rev. Titian Mengus, Pastor of St. Anthony's Church and Father Francis Monsignor Doane Assembly; the Rev. Salvatore Maranga, of Holy Family Church, Nutley. Faithful Captain Dewey R. Russo will be toastmaster. Mayor Isadore J. Padula is general chairman.

### Choir Entertains Club

The Retired Men's Club of Belleville was recently entertained by the girls' choir of Belleville High School, under the direction of Samuel W. Peck.

Members of the club now total 70. Walter Gibby, president, invites all retired men to join the non-sectarian group who meet Wednesday mornings at 9:30. There are no dues nor initiation fees.

### Confraternity To Meet

The next regular monthly meeting of St. Peter's Confraternity will be held on Monday evening, March 2nd, in the new auditorium.

After a business meeting, a film will be shown on the Life of Sister Marian Theresa. There will also be entertainment in line with St. Patrick's Day.

Mrs. James McConnon in chairman in charge of refreshments and she will be assisted by Mrs. H. Duell, Mrs. E. Zienkiewicz, Mrs. William McCoy, Mrs. D. Grande, Mrs. Allen Noyell and Mrs. Bart Donachie.

### Sullivan Is Guest Speaker

Harry J. Sullivan, Commissioner of the Department of Public Safety, will be guest speaker at the meeting of the Men's Club of Congregation Anavah Achin, on Monday, March 2, 9 p.m., at 125 Academy Street. His subject will be "Latest Regulations and Innovations of Public Safety."

### Essay Prize Winner

Peter B. Wendel, son of Mr. and Mrs. Peter G. Wendel, 174 Malone Avenue, has been named the second prize winner in the 1959 Brainerd Stewardship Essay-Oratorical Contest at Lafayette College, Easton, Pa.

Wendel, who graduated from Belleville High School last June, was awarded a \$50 prize for his essay entitled "Music and Stewardship." He is a freshman and a member of Kirby social dormitory at the arts-science engineering college.

### Early Beauty Expert

One of America's earliest beauty experts was a girl who couldn't even write her name. But she could boil up a sweet-smelling soap from lye, fats and herbs that made her a fortune, reports the N. Y. Collector Antiques Fair, to be held March 7-15. Her name was Ruth Parlington. She started business about 1815 and it continued until at least 1855.

### On College Dean's List

Miss Sandra Internoni, daughter of Mr. and Mrs. E. Internoni of 214 Fairway Avenue, has been placed on the Dean's List for the first semester of the academic year, at the College of William and Mary, Williamsburg, Va.

Miss Internoni, a junior majoring in education, has passed the requirements of at least one A, no grade below C, and at least B average.

### Pennetti At Dix

Pvt. Anthony Pennetti, son of Mr. and Mrs. Anthony Pennetti of Lake Street, has been assigned to H. Company, 1st Training Regiment, at Fort Dix.

Prior to his arrival at Dix, P. Pennetti attended Belleville High School.

75¢

WILL TAKE YOU TO

Lowiston, Me.  
Pittsburgh, Pa.  
Charlottesville, Va.  
Toronto, Canada

BY PHONE

3 min. station rate from Newark after 6 P.M. and all day Sunday. 10% tax not included.

Reductions As Great As 30% On

Aluminum Clapboard Siding

Roofing Carpentry General Repairs

Financing Arranged Call PL 1-0257

Heights Construction

86 Tappan Avenue

Belleville

PONTIAC NAMED CAR OF THE YEAR

"Pontiac with wide-track wheels is the best combination of ride... handling... performance and styling of any '59 car"

—The Editors of Motor Trend Magazine

In making its annual automotive award, the staff of Motor Trend Magazine, leading automotive publication, tests and evaluates all new cars. Here are quotations from the April 1959 issue:

"The stability of the 1959 Pontiac is the outstanding automotive advance of the year. Everyone considering a new car should experience it."

"It's the best balanced passenger car in America. We firmly believe that in moving the wheels farther apart, to develop the widest stance of any American car, Pontiac has created an entirely new sense of balance and handling security."

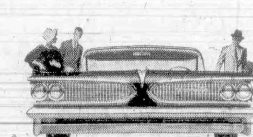
"Pontiac's lines are clean, simple and beautiful. It has a fleet look, a trim appearance. The wide wheel design contributes greatly to its

overall integrated styling. Any comparison with narrower track cars readily shows the difference."

"For the economy-minded, an efficient new engine. The new 420E Tempest engine engine offers remarkable performance along with exceptionally high mileage while operating on regular grade gasoline."

"Pontiac is again tops in performance, based on our extensive road testing. Acceleration is outstanding, yet the engine is unusually quiet and smooth."

Your nearest Pontiac dealer will be glad to let you test this award-winning automobile on your own. You'll see why it's the year's most talked-about car!



THE ONLY CAR WITH WIDE-TRACK WHEELS

Wheels are five inches farther apart. This widens only the stance, not the car. Pontiac takes a better grip on the road, hugs tighter on curves and corners. Sway and lean disappear, ride is smoother, balanced, steadier. Handling is sparer. You drive with a new confidence, a comforting security. Pontiac gives you roadability no "narrow gauge" can offer.

FREE! If you would like a reprint of the complete, illustrated article with all the tests and evaluations on which Motor Trend judged Pontiac "Car of the Year" see your Pontiac dealer or simply send your name and address on a postcard to Pontiac, Motor Division, Department 10, Pontiac, Michigan.

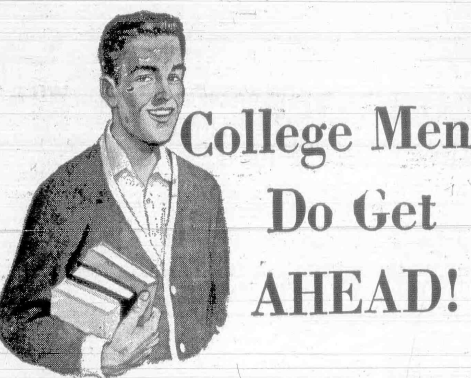
PONTIAC! America's Number 1 Road Car  
Three Totally New Series • Catalina • Star Chief • Bonneville

SEE YOUR LOCAL AUTHORIZED PONTIAC DEALER

ARROWHEAD PONTIAC, INC.

645 Washington Avenue

Belleville, N. J.



College Men Do Get AHEAD!

Average income for college graduates far exceeds that of most people with less formal education. To give your child the best career advantage, plan now for his college education.

Open a savings account at Peoples National Bank and Trust Company. A small amount saved each week now will go a long way in years to come to help cover to costs of education.

3% INTEREST ON SAVINGS

PEOPLES NATIONAL BANK AND TRUST COMPANY  
237 WASHINGTON AVENUE



Parking for Customers Adjacent to the Bank Building

BELLEVILLE, NEW JERSEY

Member Federal Deposit Insurance Corporation



# SPOTLIGHT ON SPORTS

By FRANK JONES

St. Peter's CYO basketball outfit is making ominous noises in the race for County CYO crown in the junior league. The Petreans took the measure of Newark's St. Casimir's team and will now face St. Aloysius, also of Newark, to determine the finalist. Indications are that, if St. Peter's can get by St. Aloysius, they should have clear sailing ahead for the title.

Ballots have been sent out to all the newspapers in the County as the annual search for the outstanding high school player of the year in Essex County is again underway. The County CYO makes an annual award to the player of the year at its Night of Champions held every June. Last year's winner was Bloomfield's Matt Abernathy. Belleville, Montclair and Bloomfield are the only schools with as many as two titleholders in the 14 years of the award's existence.

Sportswriters and coaches send in their nominations for the top three players in order of preference with points given on a 5-3-1 basis. The two Belleville High athletes were Charles Travers and Richie Veith. As far as this year's nominations are concerned, chances are dim that any of the local hoopers would have a chance at any of the three top spots, although we think that Fred Riccio is certainly at least worthy of consideration as one of the outstanding school boy performers. Riccio ended the season as the top Belleville scorer with close to 285 points to his credit as he sparked a sub-par Belleville team to a couple of surprising victories.

Word came from the Recreation Department this week that the Recreation Kiwanis Bowling League has blossomed into another new loop, this one called the St. Peter's Junior Bowling League. Twelve teams will compete in the circuit which will meet Wednesday and Friday afternoons at Branch Brook Lanes. It is gratifying to note that the efforts of the Department and the Kiwanis Club has resulted in 30 junior bowling teams now taking part in the fine program for Belleville's youngsters.

The regular league season of the Recreation Senior and Intermediate Basketball Leagues ended last week with Chet's Sweet Shop and the Dolphins tied for first place in the senior loop and Roy's Sports Shop taking the title in the Intermediate League. Playoffs among the top four teams in each league have begun.

Naturally we're not that annoying type of sportswriter who blurt out "I told you so" when one of his predictions happens to be lucky enough to come true, but ..... didn't we tell you that Irvington High would be the team to watch in the Essex County Basketball Tournament? To night the Campers face Orange in the championship game, and we will now travel even further out on our limb by predicting that Irvington will pick up all the marbles. If the Campers do win, imagine how obnoxious we'll be next week.

## McGreevy's Wins Three

McGreevy's began to put daylight between itself and the rest of the league last week by sweeping last night's Bay's Druggs while runnerup Riverside Garage was dropping two games to S. W. Brown in Nulley Friday Night Ladies League action.

Kierman's swept three from George S. Black and Fulco's won a pair from Lardier's.

Standings		W	L
McGreevy's	41	1	
Riverside Garage	33	27	
S. W. Brown	32	27 1/2	
Kierman's	30 1/2	29 1/2	
Fulco's	29	31	
Lardier's	27	33	
George S. Black	27	33	
Bay's Druggs	22	38	

Individuals		Points
Bette Cunningham	153.39	
Marjorie Neil	153.38	
Ann Dalton	143.25	
Alice Kins	142.25	
Marge Dacey	141.22	
Mary Mooney	140.34	
Peggy Frey	140.34	
Clara Zamponi	140.15	
Ida Bander	139.58	
Jean Tremel	139.50	
Maizie Gorman	139.24	
Ida Pajonki	139.22	

## ACES SWEEP TIGHTENS RACE OF TOP TEAMS

Roy Dahlquist Rolls High Game Of 246; Upset Of Busters Narrows Margin

Things tightened up in the Fawcett Men's Bowling League last week as the second-place Aces brought the league-leading Busters to within two games of the pack with a surprising sweep.

Standings		W	L	Points
Aces	37 1/2	25 1/2	798	
Busters	35 1/2	27 1/2	749	
Spaulders	35	28	728	
Spaulders	33	30	741	
Cubs	31	32	691	
Muffins	29 1/2	35 1/2	735	
Famers	24	39	689	

# Jay Vees Knocked Out Of Tourney By Seton Hall 68-33

Belleville's Jayvees Find The Pony Pirate's Team And Huge Gym Too Much To Overcome As They Lose In The Tourney Semi-Finals

Saturday, at Seton Hall University Gym, Coach Thomas Testa's Belleville Jayvees were knocked out of the Essex County Junior Varsity Tournament as the Seton Hall Jayvees posted a 68-33 semi-final win.

While only George Sheridan, who had 18 tallies, could hit for the Belleville team, the Pony Pirates had three scorers in double figures as their knowledge of the huge court paid off. The Belleville team could not cope with the long end and as a result the Pony Pirates had an easy time of it.

The Hall jumped off to a quick 5-0 lead on three charity tosses and a field goal. Then Frank Anichiarich broke the tie for the Belleville and made it 5-1. The margin remained the same as Sheridan and Gauspohl exchanged buckets but then the Seton Hall team ran off eight straight points to end the first quarter with a 15-3 advantage.

Early in the second quarter with Seton Hall ahead 18-5 the Belleville team made their first and only bid for the lead as Anichiarich, Sheridan, and Ralph Chet's Sweet Shop, who had eight straight markers to cut the Pirates lead to five points. However, this challenge was thwarted as the Hall rolled off five in a row for a 23-13 lead. The rest of the ball was played on even terms with Seton Hall holding a 29-19 halftime edge.

The entire second half was all Seton Hall's as they tallied 40 points in the two periods while holding the Belleville team to 14 tallies. The Hall opened the third quarter with a string of 13 points to put the game far out of the Belleville team's reach. Gauspohl and Robinson paced the Hall during the stretch with six and five points respectively.

With the third quarter score at 31-24 the Pony Pirates opened the final session with nine straight markers to make it 60-24. Then from this point on both coaches substituted freely to finish the fray.

## REC-KIWANIS LEAGUE TO END FIRST SEASON

Commissioner Kierman Terms Initial Year As 'Highly Successful'

Commissioner George F. Kierman announced this week that tomorrow's bowling at Branch Brook Lanes will bring to a close the first season of the Recreation - Kiwanis Junior Bowling League.

It has been a successful season with good attendance among the 27 teams competing, he said.

In the girls division the Jolly Cleaners are well out in front with 28 1/2 wins. The Perkettes are in second with 25 1/2 while the George Kierman Association and the Strumulo Association are hot on the Perkettes heels with 23 wins each. Next in line is Belleville Martinizing with 19 wins.

Standings		Team	Wins
Boys League		Sullivan Assn.	28
		Belleville Typewriter	28
		B. & M.	23
		Specs	19
		K and W	19
Girls League		Tiber, Hardward	17
		Albertine All-Stars	15 1/2
		A. J. Crowhurst	15
		J. Heller & Sons	15
		Lester Drug	14
		Kiwanis Eagles	13 1/2
		Branch Brook Lanes	12
		Jolly Cleaners	28 1/2
		Felice	23 1/2
		George Kierman Assn.	23

### You Get More For Your Money at Acme...

## Cash Savings! S.H. Green Stamps!

# Lancaster Brand Meats!

## Chuck Roast 43¢

You are always sure of more and better eating when you choose famous Lancaster Brand Meats... better flavor every time... always priced to save you money!

LANCASTER BRAND BONELESS	
<b>Cross Cut Roast</b> 89¢	<b>Chuck Steak</b> 53¢
FRESH-Whole or Shank Half	
<b>Hams</b> 49¢	<b>Bull</b> 59¢
LANCASTER BRAND SLICED	
<b>Bacon</b> 33¢	<b>Collage Butts</b> 59¢
FIRESIDE SLICED	
<b>Bacon</b> 49¢	<b>Smoked Beef Tongues</b> 49¢
HORMEL COUNTRY STYLE FRESH	
<b>Sausage</b> 59¢	<b>Sandwich Spread</b> 29¢

Acme is Headquarters for Lenten Foods!

<b>Shrimp</b> 99¢	<b>French Fried Shrimp</b> 65¢
ARCTIC SEAL	
<b>Perch Fillet</b> 31¢	<b>Fish Sticks</b> 31¢

<b>Tuna</b> 3 7 oz. \$1.00	<b>Peanut Butter</b> 3 11 oz. \$1.00
<b>Libby's Peas</b> 3 17 oz. 49¢	<b>Catsup</b> 2 14 oz. 35¢
<b>Toilet Tissue</b> 4 rolls 35¢	<b>Salad Dressing</b> 4 jars 39¢
<b>Oranges</b> 49¢	<b>Bananas</b> 2 lbs. 25¢

<b>Swiss Cheese</b> 35¢	<b>Pies</b> 49¢	<b>Orange Juice</b> 6 6 oz. \$1.00
<b>Cream Cheese</b> 25¢	<b>Pound Cake</b> 59¢	<b>Pizza Pies</b> 12 oz. 39¢

Prices Effective Thursday thru Saturday, Feb. 26th to 28th

### Go Rambler

Even better economy for '59!

Switch to Rambler '59... you can save hundreds of dollars on first cost. Get even more miles per gallon. Highest resale. Easiest to park. Try individual optional sofa front seats. Go Rambler 6 or V-8.

New 100-inch wheelbase RAMBLER AMERICAN STATION WAGON. Save \$300.00 on first cost. 2000 less than other models. 2000 less than other models. 2000 less than other models. 2000 less than other models.

### Philharmonic GREAT MUSIC

ALBUM 1 ONLY 49¢ ALBUMS 2-20 EACH \$1.39

### Stainless Steel Tableware

5-Piece Place Setting Only 69¢ Each place setting comes in handy cloth carrier.

- ★ Anti-Rust
- ★ Corrosion Proof
- ★ Tarnish Proof
- ★ Stain Proof

### DAIRY

IDEAL - SLICED

### BAKERY

VIRGINIA LEE-BLUEBERRY

### FROZEN FOOD

IDEAL FROZEN

BLUE & WHITE SALES, 163 Washington Ave.  
SPECIAL! YOU'RE INVITED TO TEST OUR BEST







## This image shows a blank, aged, cream-colored page, likely an endpaper or flyleaf of a book. The paper has a slightly textured appearance with some faint smudges and discoloration, characteristic of old paper. The left edge of the page shows the binding of the book.

# THE GLASS CO.

STORE FRONTS

585 WASHINGTON AVENUE, PLYMOUTH 9-8900

BELLEVILLE 9, N. J.

Open Daily 8 A.M. to 6 P.M. — Monday - Thursday to 9 P.M.

Announcing...

## FEDFOAM

the first vinyl plastic foam material  
that fulfills ALL cushioning requirements

<ul style="list-style-type: none"> <li>• Can be cut to any size or shape with a sharp knife or razor blade.</li> <li>• Fire resistant.</li> <li>• Tensile and tear strength very high — even after high and low temperature and humidity exposures.</li> <li>• Resists humidity and direct contact with water.</li> <li>• Not affected by sunlight.</li> <li>• Conforms to covering — does not form extra border.</li> <li>• No loose corners or need for cotton corner stuffing.</li> <li>• No special inserting equipment needed — can be done by anyone.</li> <li>• "T" and all other irregular cushion shapes, to fit all chairs or other furniture requirements without any special tools.</li> <li>• Immediate Delivery !!! No waiting for special fabrication.</li> </ul>	Average Living Room Chair Cushion	
	20" x 20" x 3 1/2"	\$ 9.21
	Average Dining Room Chair Cushion	
	12" x 16" x 1 1/2"	63
	Average Recreation Room Cushion	
	20" x 36" x 1"	4.70
	Average Boat Cushion	
	20" x 36" x 2"	9.40
	Automobile Driver Back or Seat Cushion	
	15" x 18" x 1"	1.88
	Wheel Chair Back or Seat Cushion	
	15" x 18" x 1"	1.88
	Bicycle or Motorcycle Seat Cushion	
	12" x 12" x 1/4"	24
	Office Chair Cushions	
	16" x 16" x 2"	3.35
	Mattress Toppers	
	54" x 72" x 1/4"	64.8
	Single Bed Mattress	
	30" x 72" x 4"	56.40
	Twin Bed Mattress	
	39" x 72" x 4"	73.32
	Full Size Mattress	
	54" x 72" x 4"	101.52



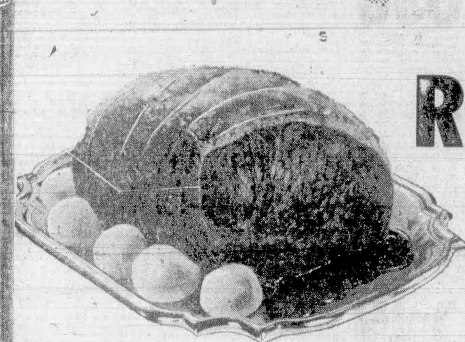




A&P's 100th BIRTHDAY CELEBRATION!

OUR STORE WIDE VALUES EVERY DAY SAVE YOU EXTRA CASH...

# put the PROOF IN YOUR PURSE!



## TOP or BOTTOM ROUND ROAST

"Super-Right" Quality Beef  
**BONELESS**  
NO FAT ADDED

**79¢**  
lb.

**PORK BUTTS**  
SMOKED BONELESS  
"Super-Right" Quality  
**59¢**  
lb.

### Frozen Food Buys!

PIZZA-FOURS	Dorann brand	12 oz. pkg.	39¢
GREEN BEANS	A&P brand	9 oz. pkg.	49¢
Libby's Whole Baby Okra	French style	2 10 oz. pks.	39¢
Libby's Kale	Serve it buttered or creamed	2 10 oz. pks.	27¢
Downyflake Waffles	Pop in toaster	2 5 oz. pks.	29¢
Libby's Red Raspberries		10 oz. pkg.	27¢
Libby's Whole Strawberries		16 oz. cup	39¢
Roast Turkey Slices	Dinner Ready	5 oz. pkg.	37¢
Birds Eye Fish Sticks	Heat 'n eat	8 oz. pkg.	35¢

**JANE PARKER**  
**BLUEBERRY PIE**  
8" Size **55¢**  
Hot Cross Buns Jane Parker pkg. of 8 for 35¢

### Dairy Favorites!

MUENSTER SLICES	A&P brand	8 oz. pkg.	31¢
Italian Romano	Imported	lb.	95¢
Ched-O-Bit	Fancy quality	8 oz. pkg.	25¢
Kraft's Cheez-Whiz	CHEESE FOOD—All Purpose	8 oz. jar	57¢
Borden's Cream Cheese	Pasteurized Process—Plain	8 oz. jar	29¢
Borden's Cottage Cheese	CREAMED Vegetable Salad	12 oz. cup	28¢

### FLOWER SHOW

New York Coliseum... March 7-14  
Box office A&P price \$1.50 Supply limited—Buy now!  
Save time! Save money!  
Visit A&P display on main floor left of escalators

SWIFT'S MEATS	FOR BABIES	2 jars	49¢
SCOTTIES	2 pks. of 200	29¢	pkg. of 400 27¢
IVORY FLAKES	For dishes and fine fabrics	large pkg.	35¢
IVORY SNOW	large pkg.	33¢	giant pkg. 79¢
DASH DETERGENT	For automatic large washers	large pkg.	39¢

"Super-Right" Quality—Boneless

TOP SIRLOIN ROAST	lb.	79¢
"Super-Right" Quality STEWING BEEF	BONELESS lb.	79¢
"Super-Right" Quality FLANK STEAKS	BONELESS lb.	99¢
"Super-Right" Quality GROUND BEEF	Freshly Ground lb.	49¢

Super-Right Brand

SLICED BACON	Top Quality Top Value 1 lb. pkg.	57¢
Super-Right Brand FRANKFURTERS	Regular 1 lb. pkg.	59¢
Swift's Premium SAUSAGE	BROWN 'N SERVE 8 oz. pkg.	55¢
For Cocktails and Salads FANCY SHRIMP	lb.	89¢

### FINE QUALITY MONEY-SAVING VALUES A&P's Grocery Buys!

KELLOGG'S SPECIAL "K" CEREAL	2 6 1/2 oz. pkgs.	49¢
NIBLETS CORN	Whole Kernel 3 12 oz. cans	49¢
GOLD MEDAL FLOUR	5 lb. bag	49¢
HERSHEY SYRUP	2 16 oz. cans	35¢
MOTT'S APPLE SAUCE	2 25 oz. jars	45¢
HI-C ORANGE DRINK	46 oz. can	29¢
LIBBY'S PEAS	With 10 Cent Newspaper Coupon 2 17 oz. cans	23¢
BUMBLE BEE SALMON	Fancy—Blackback 7 1/4 can	53¢
HUNTS TOMATO PASTE	6 8 oz. cans	47¢
DEL MONTE CATSUP	2 14 oz. bottles	37¢
BROADCAST HASH	2 15 1/2 oz. cans	63¢
DEL MONTE FRUIT COCKTAIL	2 17 oz. cans	49¢

A&P Brand

INSTANT COFFEE	2 oz. jar 37¢	6 oz. jar 89¢
Sunshine Hydrox Cookies	12 oz. cello pkg.	33¢
Nabisco Mallomars	Chocolate—Twin Pack 8 oz. pkg.	35¢

Plain or Iodized

DIAMOND SALT	2 36 oz. pks.	23¢
Potato Chips	Jane Parker Regular or Ripped—twin pack 11 oz. box	49¢
Burly's Cookies	Lemon Squash Sandwich 12 oz. pkg.	39¢

Prices effective through Saturday, February 28th in Super Markets and Self-Service stores only in Metropolitan New Jersey and Richmond, Rockland and Orange Counties.

AMERICA'S DEPENDABLE FOOD MERCHANT



**100<sup>th</sup>**  
BIRTHDAY  
Celebration  
1859-1959

### Quick-Frozen Seafood!

Haddock Fillet	Cap'n John's 16 oz. pkg.	49¢
Empress Rainbow Trout	10 oz. pkg.	49¢

### Farm-Fresh Fruits & Vegetables!

GRAPEFRUIT SEEDLESS	5 lb. bag	29¢
WHITE, From Florida Groves		
PINEAPPLE	Sweet and Juicy Extra Large Size each	29¢
ORANGES	NAVEL California—Large Size 10 for	49¢
APPLES	DELICIOUS Washington State 2 lb.	29¢
PASCAL CELERY	stalks	17¢

WISE POTATO CHIPS	4 oz. pkg.	25¢
Nescafe Instant Coffee	4 oz. jar	1.17
Nestle's Morsels	Semi-Sweet 6 oz. jar	27¢
Ragu Spaghetti Sauce	15 1/2 oz. can	37¢
Tuna Fish	Chicken of the Sea 6 1/2 oz. can	31¢
Kretschmer Wheat Germ	DIETIC—LIGHT MEAT 12 oz. jar	35¢
Kitchen Charm Waxed Paper	2 100 ft. rolls	39¢
Marcal Toilet Tissue	Assorted Colors roll	10¢
Homemade Garbage Bags	2 pgs. of 7	19¢

**You Can't Get Fresher Flavor!**  
Rich & Full-Boiled  
**RED CIRCLE COFFEE**  
1-LB. BAG **63¢** 3-Lb. Bag **\$1.83**  
Mild & Mellow  
**EIGHT O'CLOCK** 1-LB. BAG **59¢** 3-Lb. Bag **\$1.69**  
Vigorous & Winey  
**BOKAR** 1-LB. BAG **67¢** 3-Lb. Bag **\$1.95**

BLUE CHEER	large pkg.	32¢	giant pkg.	77¢
BLUE DOT DUZ	large pkg.	35¢	giant pkg.	81¢
SPIC & SPAN	large pkg.	29¢	giant pkg.	93¢
TIDE	For the family wash large pkg.	32¢	giant pkg.	77¢

<b>Zest Soap</b> Buy 2... get one at 1/2 price Banded together 3 regular cakes 37¢	<b>Zest Soap</b> Especially for the bath 2 bath cakes 39¢	<b>Camay Soap</b> For toilet and bath 4 reg. cakes 39¢	<b>Camay Soap</b> Especially for the bath 2 bath cakes 29¢	<b>Sweetheart Soap</b> 4 reg. cakes 39¢ 2 bath cakes 29¢	<b>Joy Liquid Detergent</b> 12 oz. can 39¢ 22 oz. can 69¢	<b>Trend Liquid Detergent</b> Twin Pack 2 12 oz. cans 59¢	<b>Rinso Blue</b> With 8c off label 4 oz. pkg. 69¢ With 25c off label King size 1.04
--	---	--	--	---	--	--	--